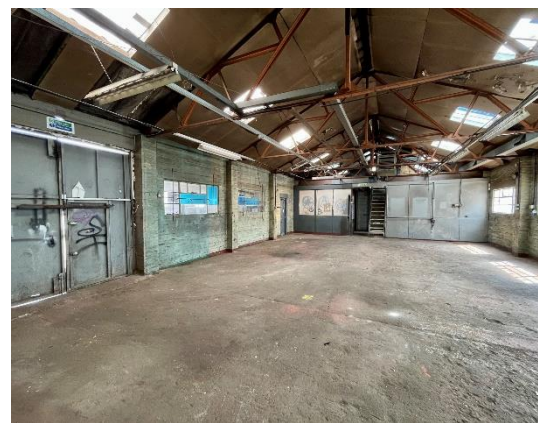


FOR SALE | INDUSTRIAL/WAREHOUSE UNIT

3,126 sq ft plus additional storage of 598 sq ft. (290.40 sq m + 55.55 SQ M)

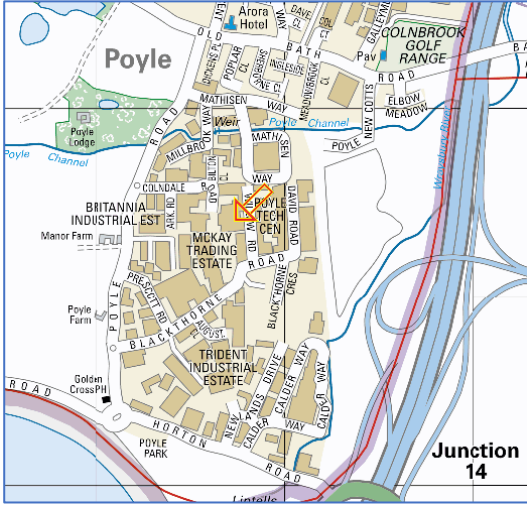
UNIT 5 WILLOW ROAD, POYLE, BERKSHIRE SL3 0BS



- Three loading doors
- 3.1m eaves height
- Three phase power
- Rear yard area
- 24 hour access
- Close to M25 (Junction 14)

Location

The unit is situated on Willow Road close to the junction with Blackthorne Road. Blackthorne Road is situated off Poyle Road which gives easy access to the M25 (Junction 14) approx. 1 mile away. Heathrow Airport Cargo Terminal is 3 miles away to the east whilst Terminal 5 is 1 mile away.



Description

Unit 5 is a single storey detached warehouse unit with offices on the ground floor.

The property has side and rear loading facilities with a rear yard area and car parking to the front.



Floor Areas (Gross Internal)

	Sq Ft	Sq m
Warehouse & office space	3,126	290.40
Additional storage	598	55.55
Total	3,724	345.95

Amenities

- Clear height of 3.1m
- 24 Hour access
- Ground floor office
- Rear yard area
- WC's
- Three phase power
- EPC- Upon application

Terms

The freehold is available with vacant possession.

Price on application.

Viewing

Strictly by appointment only.

Simon Cressey

simonc@desouza.co.uk

07939 129427

020 8707 3030

DE SOUZA

For more information or to arrange a viewing contact:

E: simonc@desouza.co.uk

T: 020 8707 3030

M: 07939 129427

www.desouza.co.uk

DISCLAIMER: These Particulars are believed to be correct at time of going to Press. The Lessors and Agents of this property give notice that:
(1) These Particulars are intended as a general outline only, for the guidance of prospective tenants, and do not constitute the whole or any part of an offer or contract.
(2) They cannot guarantee the accuracy of any description, dimension or other details contained in these Particulars and prospective tenants should not rely on them as statements of fact or representation but must satisfy themselves as to the accuracy of such details.
(3) No employee of the Agents has any authority to make or give any representation or warranty or enter into any contract whatsoever in relation to the property. MAY 2018.